

Hospital Clinics



Although you will be under the care of a named Consultant Obstetrician, as previously mentioned most of your care will be undertaken by the community midwife.

You will normally be seen 2-3 times at the hospital. Initially at around 12 weeks for a dating scan, again at 20-21 weeks for a detailed scan to look for any abnormalities, and finally when you are 1 week past your due date to discuss induction of labour.

During hospital appointments you may be seen by any member of your consultants medical team.

You may be seen more regularly at the hospital if there is a medical reason for this, for example if you have diabetes, or if you are having twins.

Health Visitor

At Holmes Chapel Health Centre, we have a team of health visitors with whom you will mainly have contact after your baby is born. They will visit you when your baby is around 10 days old, and will then take over the care of you and your baby from the midwife. They perform baby checks, and run the baby clinic

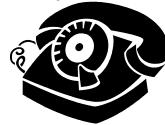
where you will take your baby to be weighed. They also run post-natal groups.

You should expect to have close contact with your health visitor as they remain responsible for the welfare of all children registered with the practice until they reach school age.

The health visitor will be able to advise you on a range of issues, including childhood immunisations, feeding and weaning etc.

If you have concerns at any time during your pregnancy and beyond, members of the team involved in your care can be contacted through the Health Centre.

Useful telephone numbers



Community midwife Leighton (Kinderton Team)	01270 612141
Community midwife Macclesfield (Tatton Team)	01625 661145
Congleton War Memorial Hospital	01260 294800
Emergency out of hours	01625 502999
Health Visitor	01477 536071
Holmes Chapel Health Centre	01477 533100
Knutsford Community Hospital	01565 757220
Leighton Hospital	01270 255141
Lloyd's pharmacy	01477 532347
Macclesfield DG Hospital	01625 421000
NHS Direct	0845 4647

HOLMES CHAPEL HEALTH CENTRE

Telephone 01477 533100

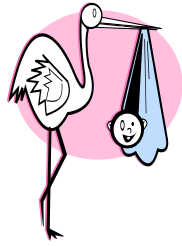
Fax 01477 532563



Ante Natal Care Patient Information

Congratulations on your pregnancy.

The purpose of this leaflet is to explain your choices in early pregnancy, and the various members of the clinical team who will be involved in your care, and their roles during your pregnancy and afterwards.



Over recent years there have been a number of changes to the way antenatal care is organised. These changes have been driven by Doctors and Midwives, who

now recognise that most pregnancies progress in a normal way, and need little 'medical' involvement. With this in mind, both of our local hospitals (Macclesfield and Leighton) have developed a system of midwife led care for most women.

Community Midwife

Now that you have had a positive pregnancy test, your first port of call should be the community midwife. You no longer need to see your GP, unless you feel there is some doubt, or specific concern over your pregnancy.

You can book an appointment with the midwife by telephoning or calling in at the Health Centre. You will be asked whether you wish to see the midwife from Leighton or Macclesfield. Antenatal care at both hospitals is broadly similar; there are minor differences over the schedule of appointments but both hospitals comply with current Antenatal care guidelines. Their respective midwives run appointments at the health centre on different



days so it is important you specify which midwife you wish to see.

The midwife will then organise your antenatal care including appointments at the hospital for scans etc. The midwife will also inform your GP that you are pregnant.

If your pregnancy is progressing normally most of your care will be undertaken by the community midwives at the health centre. For ladies having their care with Macclesfield, the only exception will be the formal booking midwife appointment around 12 weeks which will take place at the Knutsford Community Hospital.

Your community midwife will discuss antenatal screening tests, will perform blood tests and will monitor the health and welfare of you and your baby as your pregnancy progresses. They will also visit you at home after your baby is born to ensure all is well.



General Practitioner



Your GP will be informed of your pregnancy by the midwife. Pregnancy is now viewed as a 'normal state of health', rather than an illness, so that specific contact with your GP is kept to a minimum.

If you have any specific medical concerns during the pregnancy you would, of course, see your GP in the normal way. Your GP will be informed when your baby is born. Because your community midwife visits you at home routine post-natal visits are no longer performed, but your GP will attempt to contact you by telephone to check on your progress. If there is a medical reason why you need a home visit this of course can be arranged. Your GP will see you for a **post natal check** when your baby is 6 weeks old. In addition to discussing any health concerns, you should use this opportunity to discuss future **contraception** if this has not already been addressed. We offer a full range of contraceptive care at the Health Centre, including intrauterine devices (IUDs). If you would like leaflets about the various contraceptive methods available to read before you see your doctor, please ask at reception.